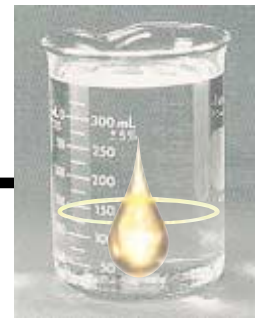
A large, glowing teardrop-shaped droplet is the central focus, surrounded by a bright yellow halo. The background is a dramatic sky with a sunset or sunrise, featuring warm orange and yellow tones and dark, silhouetted clouds. The overall composition is centered and balanced.

**WHEN IT COMES TO
CONTROLLING DUST,
ULTRA-PURE ENVIROKLEEN®
IS THE ANSWER TO YOUR
PRAYERS.**

EnviroKleen®



Another Product for the 21st Century from America's Leader in Clean Air and Clean Water.

Ideal for areas where sensitive issues including concerns with contamination of water and topsoil exist, from desert construction to intermodal to campgrounds to underground haul roads...

It's hazardous. It's damaging. It's everywhere. No matter where you go, you're constantly faced with the adverse affects of dust.

Conventional ways of dust control sometimes create greater problems than the dust itself. The wrong dust suppressant can result in problems like lingering environmental and health concerns, while alternatives like water provide short-term solutions that involve labor-intensive, multiple applications.

That's why there's EnviroKleen®. EnviroKleen® introduces state-of-the-art technology to help control dust better than ever. EnviroKleen® is formulated using a patented HT purity process. The result is a *crystal-clear* advanced fluid that's readily biodegradable in natural environments and non-toxic to humans, animals, earthworms, marine and plant life. It is clean, oil-sheen free, colorless and odorless. EnviroKleen® is also economical for controlling PM₁₀ and PM_{2.5} from open fugitive dust

sources, because it provides longer-lasting performance than alternative dust control methods, using fewer applications, and it does it *all year round*.

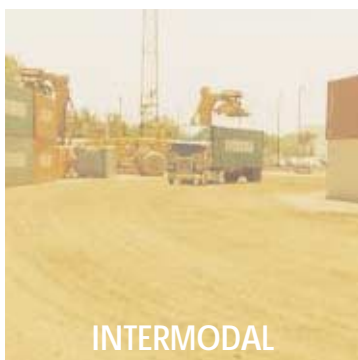
EnviroKleen® penetrates dust and remains actively effective on clay, sand, gravel, limestone, mixed aggregate and most native soils, regardless of the weather. It is ideal for indoor or outdoor applications, anywhere from normal to severe traffic areas. EnviroKleen® distinguishes itself by not creating problems such as tracking onto public roadways, sticking to vehicles or onto materials placed on its treated surfaces.



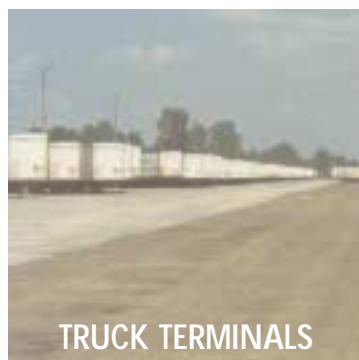
DESERT CONSTRUCTION



WINERIES



INTERMODAL



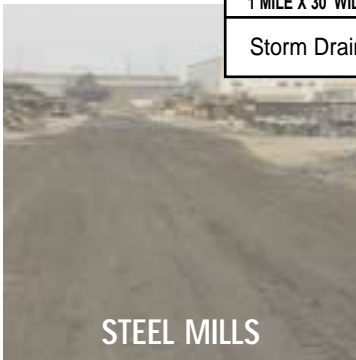
TRUCK TERMINALS

Excellent climatic tolerance, including rain and snow.

EnviroKleen® is the answer for controlling fugitive dust in the following areas: Agricultural, Berms, COFC/TOFC Operations, Construction Sites, Desert Construction Sites, Driveways, Gravel/Dirt Roads, Campgrounds, Truck Terminals, Wineries, Military Sites, Indoor Warehouses, Intermodal Facilities, Landfills, Logging Roads, Mining Haul Roads, Pipeline Construction, Reclamation Sites, Residential Areas, Rural Roads, Storage Yards, Steel Mills, Unpaved Roadways, Utilities and Yards

POTENTIAL PERFORMANCE BENEFITS	ENVIROKLEEN® SYNTHETIC FLUID	WATER	ROAD SALTS*	ASPHALT EMULSIONS	PETROLEUM RESINS	LIGNINS
Longer-Lasting	Yes	No	No	Yes	Yes	No
Year-Round Protection	Yes	No	Yes	No	No	No
Passes EPA Static Sheen Test	Yes	Yes	Yes	No	No	No
Non-Petroleum Product	Yes	Yes	Yes	No	No	Yes
Colorless	Yes	Yes	Yes	No	No	No
Water Soluable	No	Yes	Yes	No	No	Yes
Contains Polynuclear Aromatic Hydrocarbons (PAH)	No	No	No	Yes	Yes	No
Housekeeping: Tracking	No	No	No	Yes	Yes	Yes
SPRAYABLE GALLONS REQUIRED FOR A 1 MILE X 30' WIDE ROAD	1,800	550,000	8,825	18,480	13,200	5,280
Storm Drain Risk	Low	High	High	High	High	High

*Road salts are sodium chloride, calcium chloride, potassium chloride, magnesium chloride and ferrocyanide salts.



STEEL MILLS



CAMPGROUNDS



UNDERGROUND MINES

- Odorless
- No tracking
- Not slippery
- Not messy
- Applied neat
- Cumulative effect
- Lower maintenance costs
- Best summer and winter dust control
- Reworkable by dragging



GRAVEL RUNWAYS



TANK TRAILS

TOXICITY RESULTS

Test	Method	EnviroKleen® results
Rainbow Trout, ppm	96-hour LC50	>500 000
Earthworm Survival Test	14-day test	Pass
Microtox®*	EPS 1/RM/24	Pass
TCLP	n/a	Pass
Daphnia Magna	n/a	LD ₅₀ :>500,000 ppm
Acute Oral Toxicity	EPA/TSCA 40 CFR 178.1175	Practically Non-Toxic LD ₅₀ :>5,000 mg/kg (oral/rat.)
Acute Dermal Toxicity	EPA/TSCA 40 CFR 178.1100	Non-Toxic LD ₅₀ :>2,000 mg/kg (skin/rabbit)
Acute Inhalation Toxicity	EPA/TSCA 40 CFI 178.1150	Non-Toxic LC ₅₀ :>2,500 mg/m ³
Acute Dermal Irritation/Corrosion	EPA/TSCA 40 CFR 178.4470	Not a skin irritant
Acute Eye Irritation/Corrosion	EPA/TSCA 40 CFR 178.4500	Not an eye irritant
Mutagenicity	Modified Ames. for Petroleum Product	Negative

*Microtox® is a registered trademark of Azur Corporation

Test	Method	EnviroKleen® results
Appearance	Visual	Clear
Density, kg/l @ 15°C	ASTM D1298	0.83
Saturates content, %	HRMS	>99
Polynuclear Aromatics, ppm	GC MS	None detected
Sulphur content, ppm	D4629	<1
Biodegradability, %	OECD 301B	60
Static Sheen	EPA Protocol	Pass

MIDWEST INDUSTRIAL SUPPLY, INC.

P.O. Box 8431 • Canton, OH 44711 • USA
 Telephone: 330-456-3121 • Fax: 1-330-456-3247
 Toll-Free: 1-800-321-0699
 E-Mail: custserv@midwestind.com

www.midwestind.com

©2001 Midwest Industrial Supply, Inc. • Rev. 6-01

